

**STATO DI FATTO  
PIANTE**

TOP01a A001 R001 10.11.2014

1:100

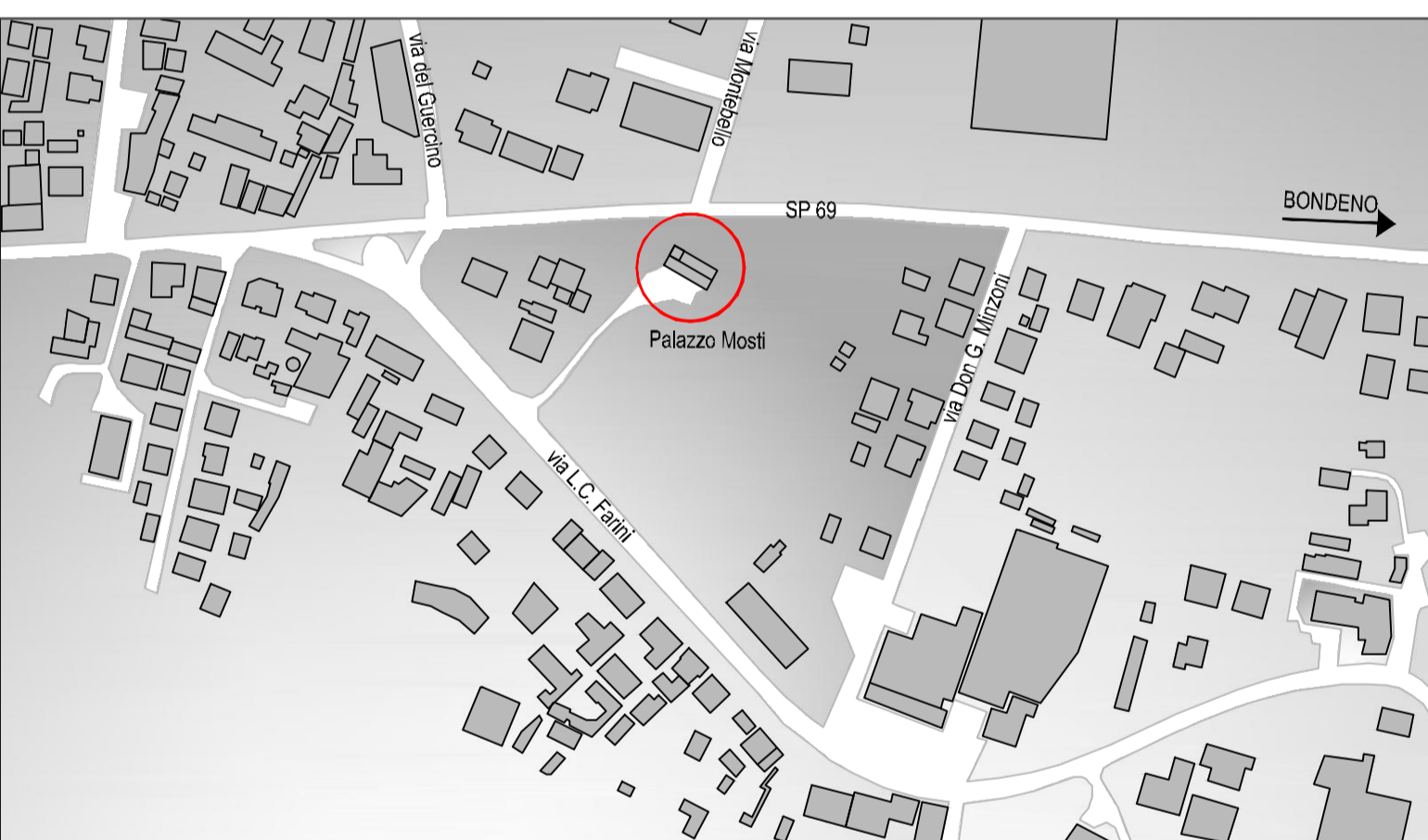
Progettazione Architettonica  
Arch. Mario Loffredo

Progettazione Strutturale  
Ing. Gianluca Loffredo

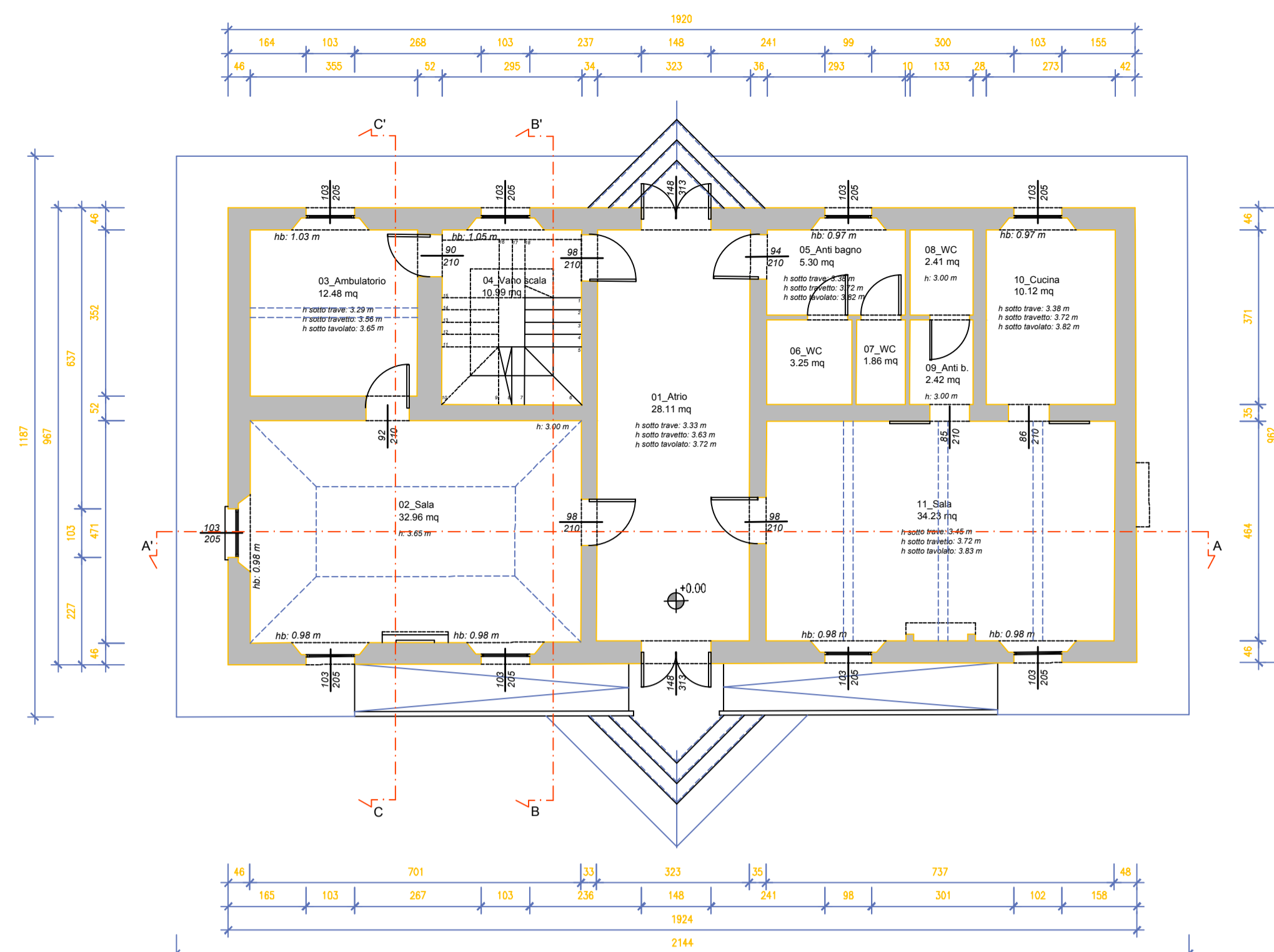
Progettazione Impianti

Arch. Caterina Villani Ing. Marco Munari /

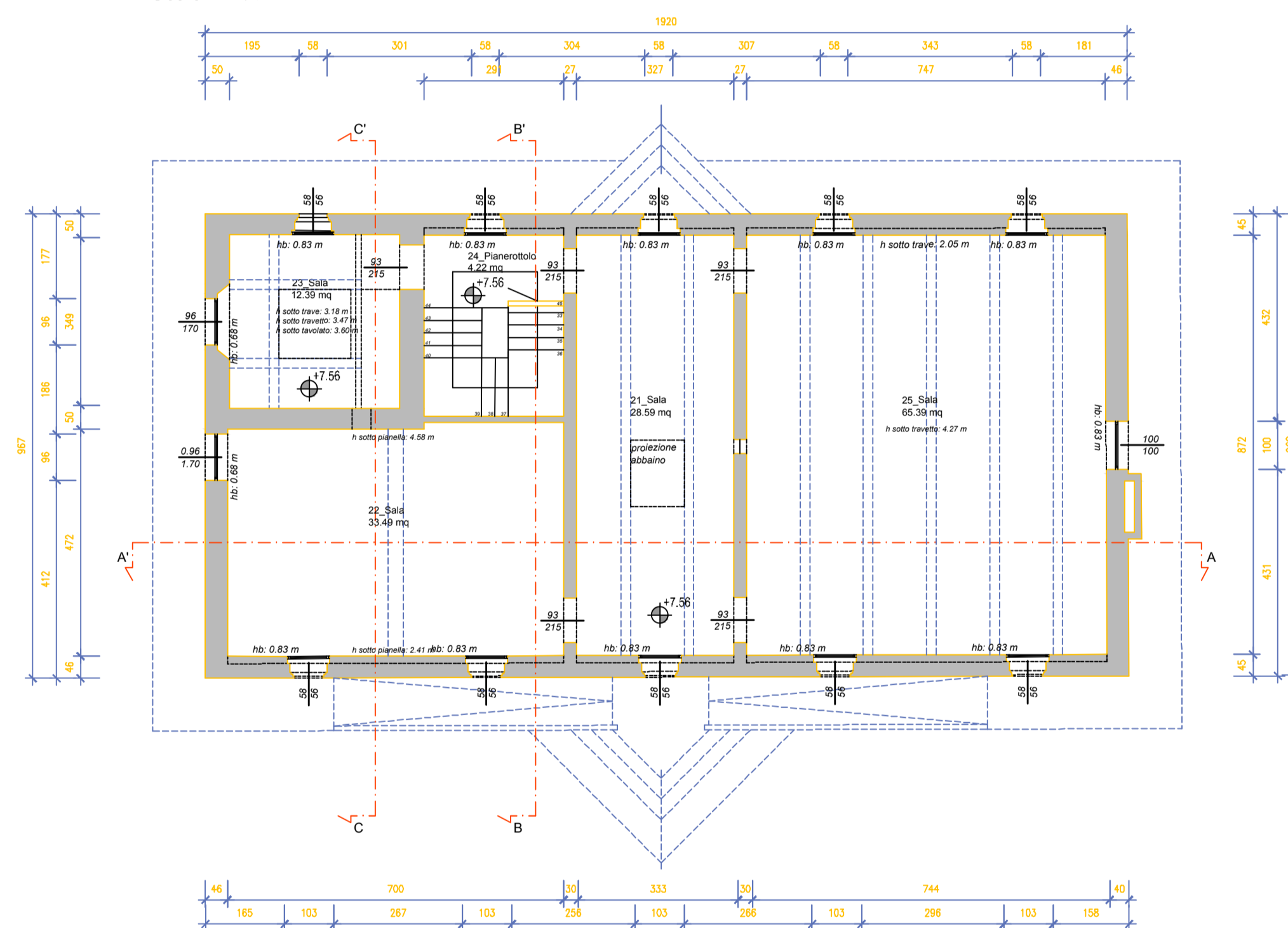
2012-0169\_S1\_ES\_TOPInx\_Rilievo.dwg



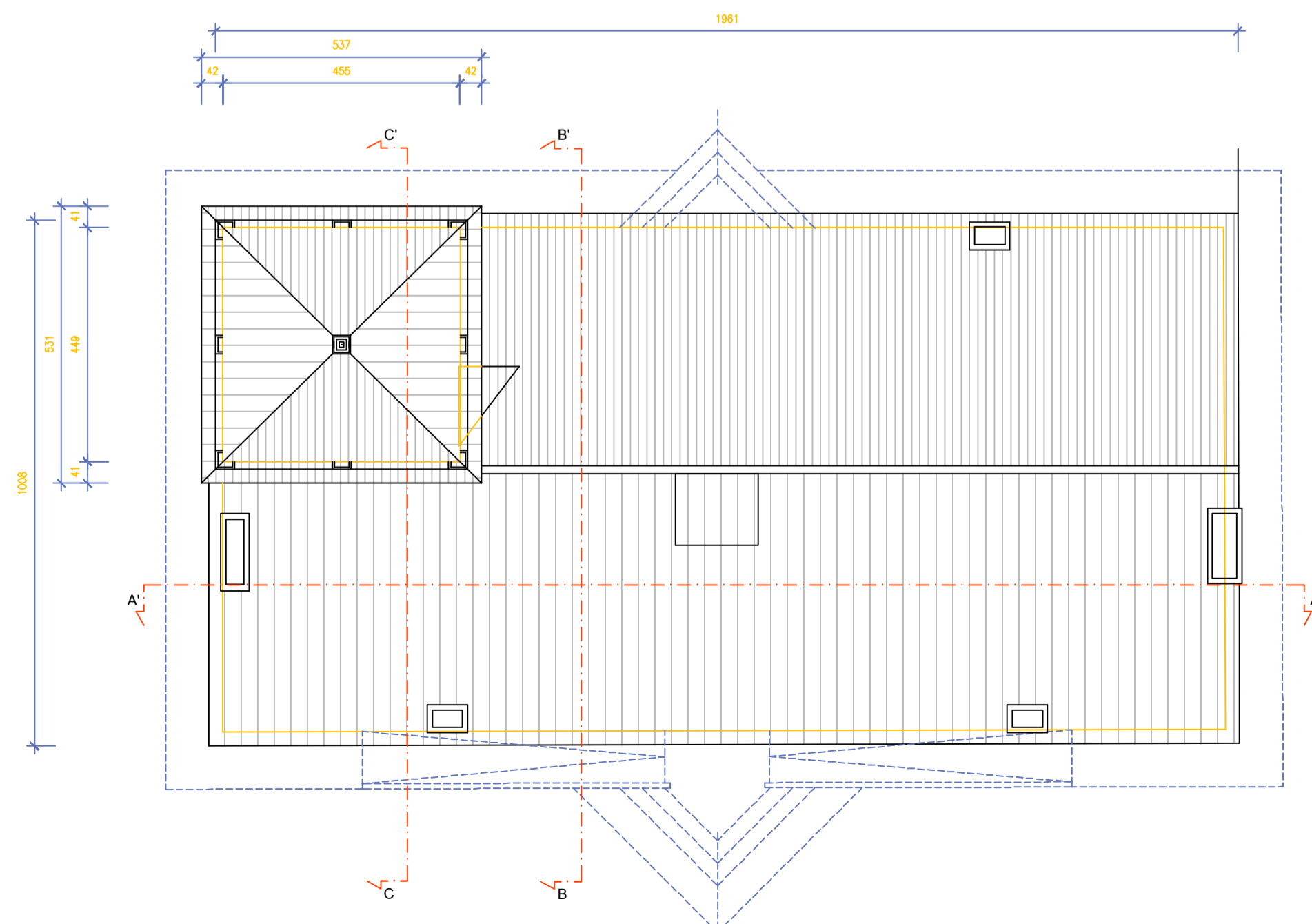
Schema con localizzazione dell'oggetto di intervento



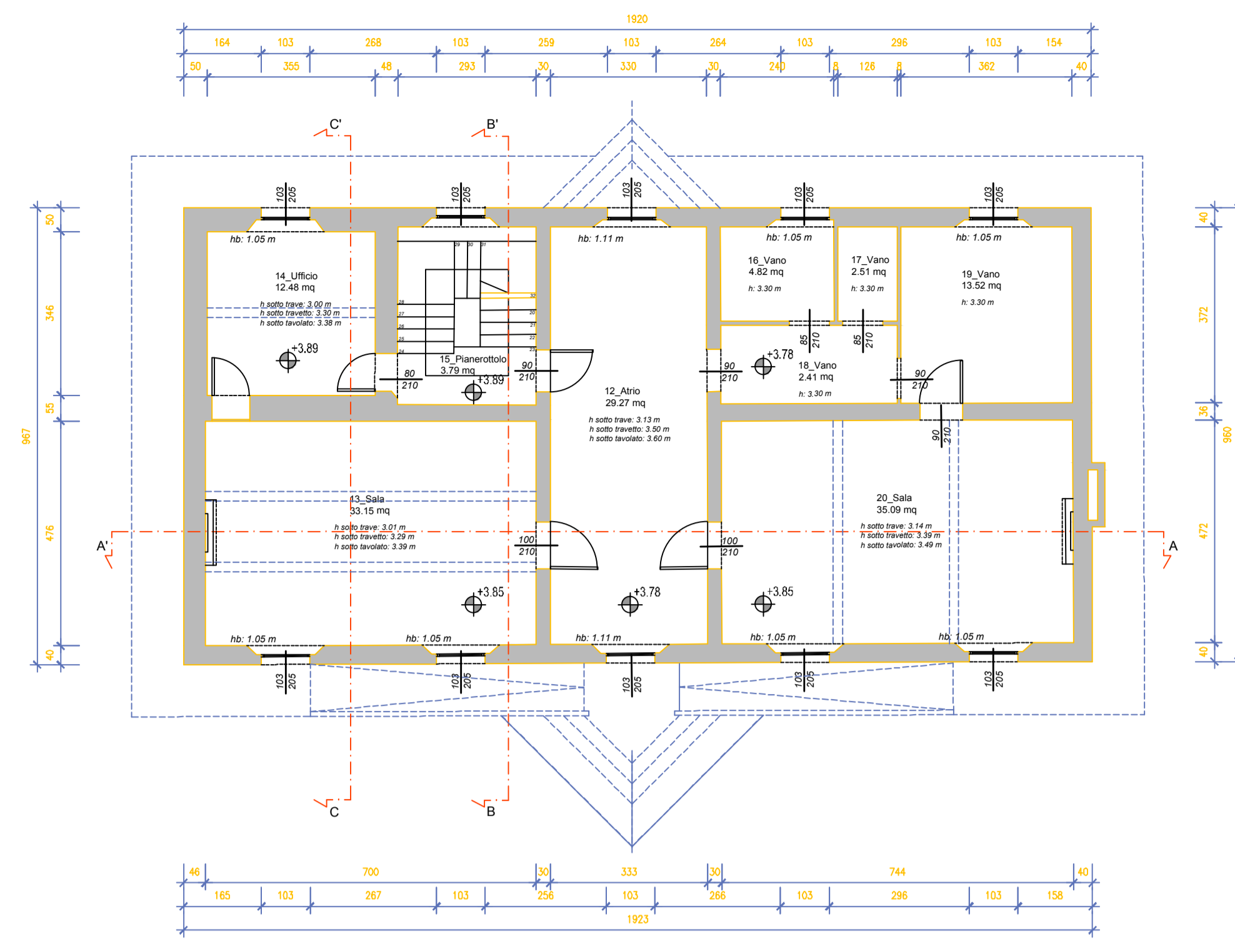
Pianta Piano Terra  
Scala 1:100



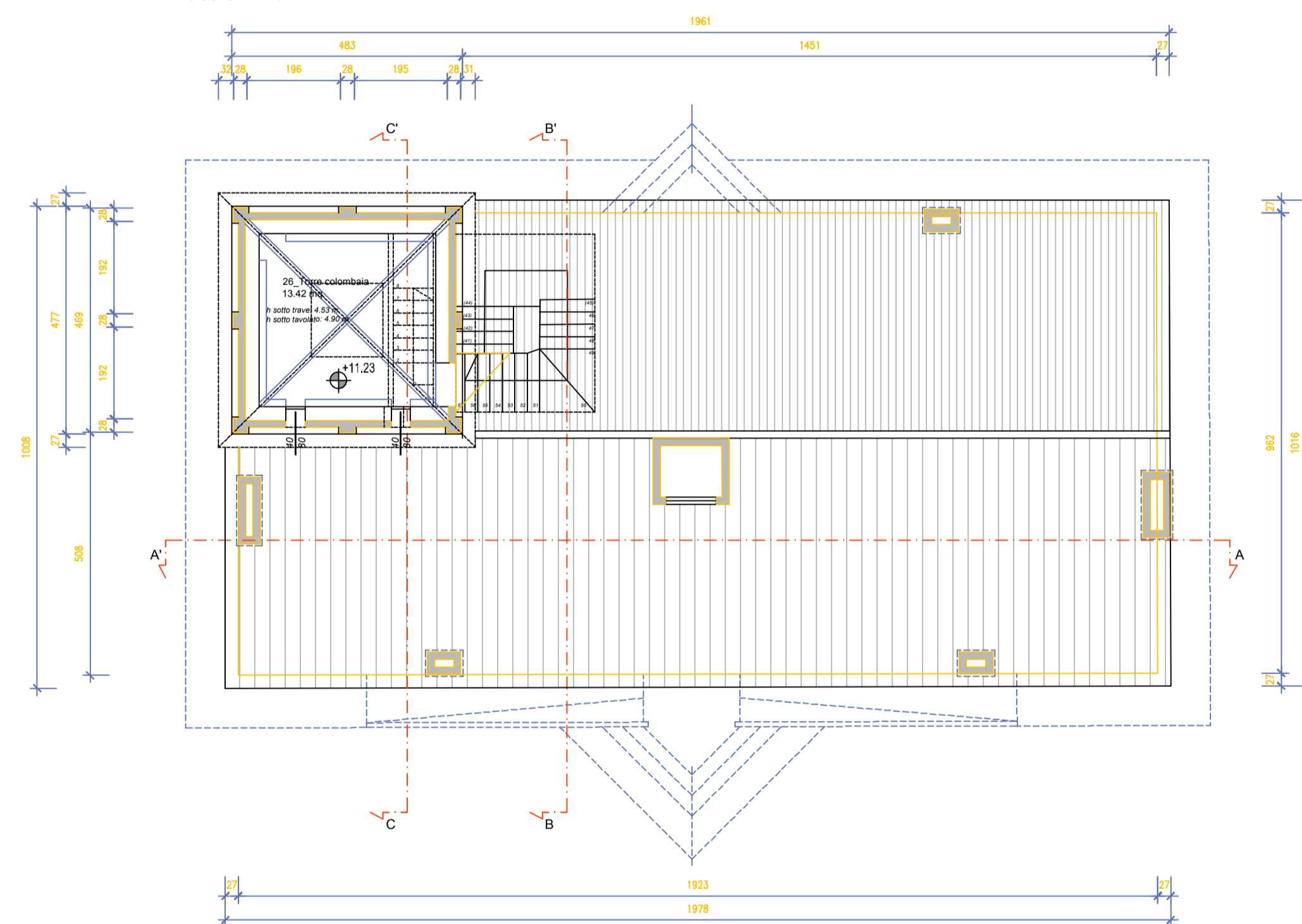
Pianta Piano Secondo  
Scala 1:100



Pianta Copertura  
Scala 1:100



Pianta Piano Primo  
Scala 1:100



Pianta Torre Colombaia  
Scala 1:100